

GPRS Dial Up

User Guide

Windows XP

Empowered by Innovation

NEC

Legal Notice

No part of this publication may be reproduced, transmitted, transcribed, stored in a retrieval system, or translated into any computer language, in any form or by any means, without the express written permission of NEC America, Inc (“NEC”).

NEC is a registered trademark of NEC Corporation, Inc.

Microsoft, Windows, and Internet Explorer are registered trademarks of Microsoft Corporation in the United States and other countries. WinZip is a registered trademark of WinZip Computing, Inc.

All other company and product names are trademarks of their respective owners.

The content of this guide is provided on an “as-is” basis. Except as required by applicable law, no warranties of any kind either expressed or implied including but not limited to the implied warranty of merchantability or fitness for a particular purpose, are made regarding the completeness, accuracy, or content of this document. NEC reserves the right to revise or rescind this guide at any time without prior notice. In addition, NEC reserves the right to make changes or improvements to the wireless phone or products described in this document without prior notice.

The most recently revised copy of any NEC Wireless Phone user document and *GPRS Frequently Asked Questions* document can be found at website www.nechdm.com.

NEC is not responsible for any loss or corruption of data, loss of income or business, or any consequential, incidental, or special damage howsoever caused.

NOTE: Use of this GPRS Dial Up connection requires the purchase of an optional NEC Authorized Accessory, the NEC USB cable. Your service provider can tell you where to purchase this USB cable. **WARNING:** Use of anything other than an NEC Authorized Accessory approved for your model of wireless phone may void your wireless phone warranty and may be dangerous.

This document contains pictures that were captured by live Windows systems while installing USB Drivers and establishing GPRS connections. Windows XP may display other dialog boxes and screens during installation and setup procedures that are informational and quickly disappear as Windows accomplishes each stage of processing. Windows may also display other screens that ask for information that is not relevant to making a successful GPRS connection. Windows displays a variety of these screens depending upon the configuration that you have already setup and established on your computer. You should provide the information that these screens request and follow the wizard process.

Version 1

Document Number: WED-933T-MAN-302-06-1.0

Copyright© 2003 NEC America, Inc. All rights reserved.

Table of Contents

GPRS Dial Up.....	1
What is GPRS Dial Up?.....	1
NEC USB Drivers.....	1
Frequently Asked Questions Document.....	1
What Is Needed to Make GPRS Work?.....	2
Equipment.....	2
Software.....	2
Services.....	2
System Requirements.....	3
Hardware Requirements.....	3
Software Requirements.....	3
USB Drivers.....	4
Creating a “USBTools” Folder.....	4
Copying the NEC USB Drivers.....	5
Connecting the NEC USB Cable To the NEC Wireless Phone.....	8
Installing the NEC USB Drivers.....	9
Technical Support and Assistance.....	14
Uninstall NEC USB Drivers Process.....	14
GPRS Dial Up Settings.....	15
Creating a New Connection.....	15
Using the New Internet Connection.....	31
Disconnecting GPRS.....	32

GPRS Dial Up

This section provides a description of:

- GPRS Dial Up
- NEC USB Drivers
- GPRS Dial Up Frequently Asked Questions document location

What is GPRS Dial Up?

GPRS (General Packet Radio Service) is a standard feature in GSM phase 2 wireless phones, which provides a TCP/IP wireless path to the Internet utilizing a GSM wireless phone and a computer. This GPRS features provides a packet style data interface to the Internet. Billing for usage of this interface is typically based upon the amount of transmitted data and does not depend upon the length of time that the Internet session is connected.

Your NEC Wireless Phone can be connected to your laptop or desktop computer and used for a GPRS dial up connection instead of using a modem with a telephone line.

When you use the GPRS Dial Up, AT&T Wireless will charge applicable data rates for access to GPRS Data Capable services.

NEC USB Drivers

The NEC USB Drivers contain the files that assist with the bi-directional flow of data between the NEC Wireless Phone and your computer's Windows® XP operating system when it is connected to the Internet via the NEC approved USB cable.

NOTE: If you have already installed the USB Drivers for the synchronization process to use Intellisync software, you DO NOT NEED TO RE-INSTALL THE USB DRIVERS FOR THE GPRS DIAL UP. You may skip the *USB Drivers* section and continue with the *GPRS Dial Up Settings*.

If you would like to use the synchronization function, refer to the *NEC Wireless Phone User Guide*, *Intellisync® Lite For NEC Wireless Phones Installation Guide*, and *Intellisync® Lite For NEC Wireless Phones User Guide* for synchronization information.

Frequently Asked Questions Document

GPRS Dial Up Frequently Asked Questions and Glossary document can be found at the website www.nechdm.com.

What Is Needed to Make GPRS Work?

This section provides the equipment, software, and services necessary in order to install the USB Drivers and create a GPRS connection to access the Internet.

Equipment

The equipment that is required includes:

- NEC Wireless Phone.
- NEC approved USB cable to connect the NEC Wireless Phone to the computer.
- Desktop computer or laptop with the system requirements stated on the next page.

Software

The software that is required includes:

- USB Drivers

(Location instructions are provided in *Copying the NEC USB Drivers* on page 5.)

- WinZip©

To copy and extract the necessary USB Drivers from the NEC website requires the assistance of **WinZip** software. You can obtain **WinZip** from the website: www.winzip.com.

Services

The service that is required:

- GPRS service that is data capable from your wireless network service provider. To take advantage of GPRS features, you must subscribe to them through your wireless network provider.
- ISP (Internet Service Provider) service to access and download the NEC USB Drivers.

WARNING: To use the features described in this guide, the phone must be turned on. Do not turn on or use the wireless phone when such use may cause radio frequency interference with equipment or dangerous situations.

System Requirements

The lists below describe the computer system requirements for installing the NEC USB Drivers on a personal computer or laptop.

Hardware Requirements

- Processor: 133 Mhz (minimum) or higher
- RAM: 128 MB for Windows XP
- Drives: Hard disk with 30 MB available
- Supported Connections: USB

Software Requirements

- Microsoft® Windows XP
- NEC USB Drivers
- WinZip

USB Drivers

This section provides the information of:

- Why do I need to create a folder on the C:\ drive called USBTools?
- How do I copy the required NEC USB Drivers for Windows XP?
- How do I connect the USB cable and NEC Wireless Phone to the computer?
- How do I install the NEC USB Drivers?
- Who do I contact regarding technical support and assistance?
- How do I uninstall the NEC USB Drivers?

NOTE: If you have already installed the USB Drivers for the synchronization process, you DO NOT NEED TO RE-INSTALL THE USB DRIVERS FOR THE GPRS DIAL UP. You may skip the *USB Drivers* section and continue with the *GPRS Dial Up Settings*.

Creating a “USBTools” Folder

Create a folder on the C:\ drive called **USBTools**.

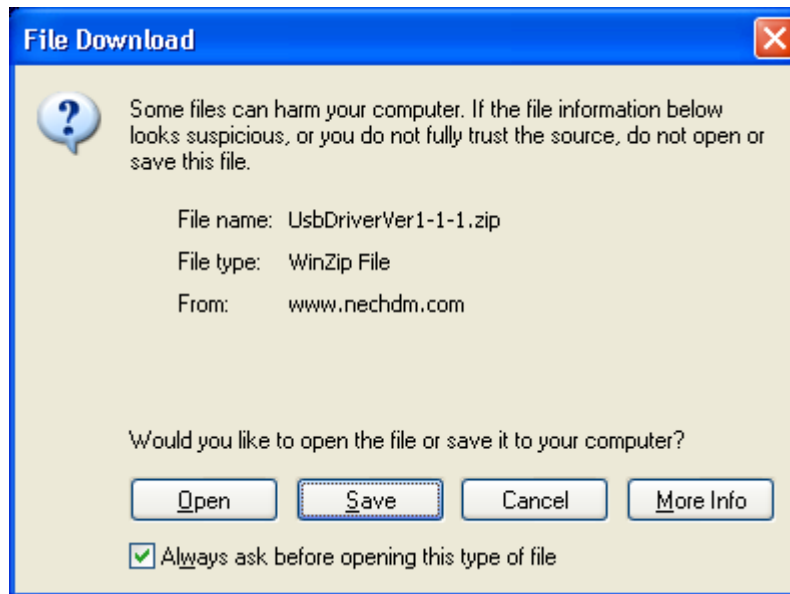
The NEC USB Drivers will be copied to the **USBTools** folder to make it easier to find the downloaded drivers for the installation process.

Copying the NEC USB Drivers

If you have not created the “USBTools” folder on the C:\ drive as instructed on page 4, do so now.

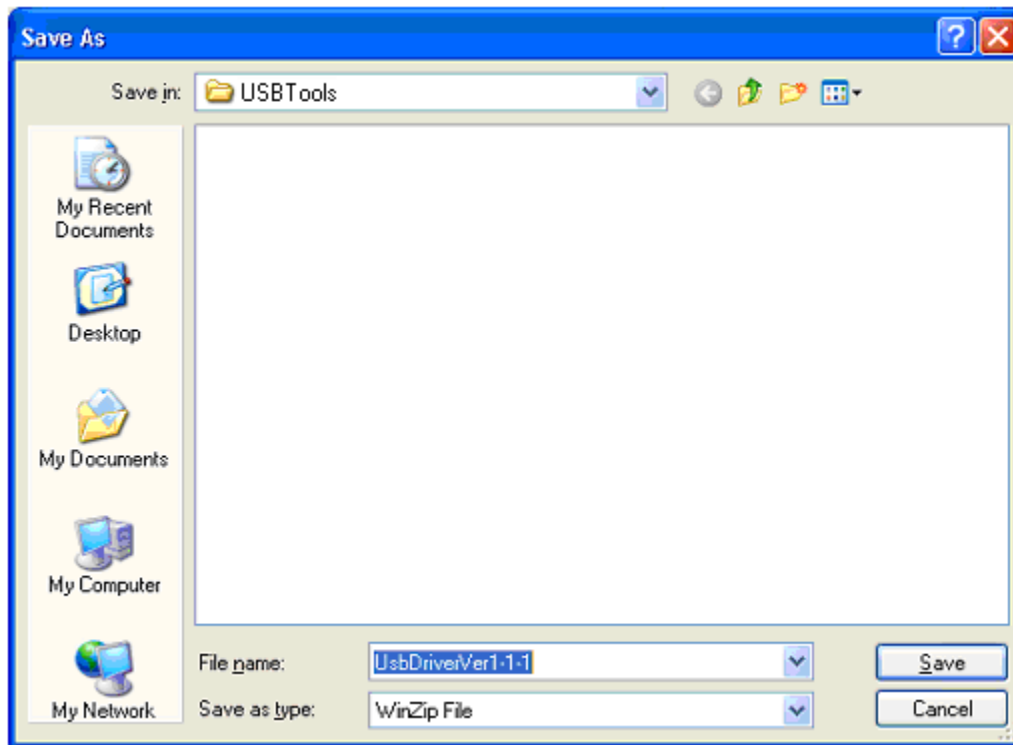
To copy the USB Drivers from the NEC website to **USBTools** folder:

1. Locate the USB Drivers at the website: www.nechdm.com. Select Toolbox and GPRS Dial Up.
2. Click on **Install USB Drivers**. The **File Download** dialog box displays.

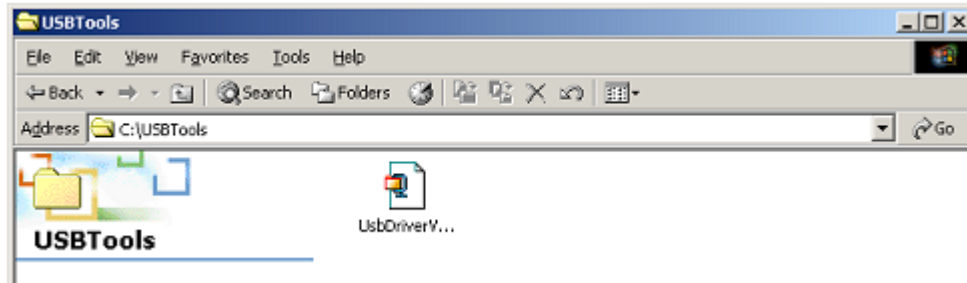


3. Click the **Save** button. The **Save As** dialog box displays.

4. Select **USBTools** folder to display in the **Save in:** field and click the **Save** button. The zip file is saved to the **USBTools** folder.



5. Close the Internet window. Open **Windows Explorer** or **My Computer**. Open the **USBTools** folder.



6. Double-click **UsbDriverVer1-1-1** zip icon.

For Classic mode, the **WinZip** window displays with a list of files. Click on the **Extract** button to display the **Extract** dialog box. Make sure that the **All files** button is selected and the **Use folder names** box is checked. Extract the files to the **USBTools** folder.

For Wizard mode, the files are automatically saved to the specified folder.


The files are saved to 3 folders (**UnInst**, **Win98**, and **WinXP_2000**) within the **USB Driver Ver1.1.1** folder of **USBTools**.

Connecting the NEC USB Cable To the NEC Wireless Phone

Before installing the USB drivers, connect the USB cable to your computer and the NEC Wireless Phone.

1. Find the location of the USB port on your computer.
2. Insert the computer end of the USB cable into the computer's USB port.
3. Gently squeeze the release clips on each side of the USB plug and insert the plug into the adapter port of the NEC Wireless Phone.
 - Be sure that the rectangular opening on the connector is lined up with the rectangular opening in the phone. The plug will slide easily into the opening. **DO NOT FORCE THE PLUG!**



4. Press the  (End/On-Off) key to power-on the NEC Wireless Phone. The **Found New Hardware Wizard** displays.

NOTE: Check that the NEC Wireless Phone's battery level icon in the status bar of the Idle screen shows to be fully charged.

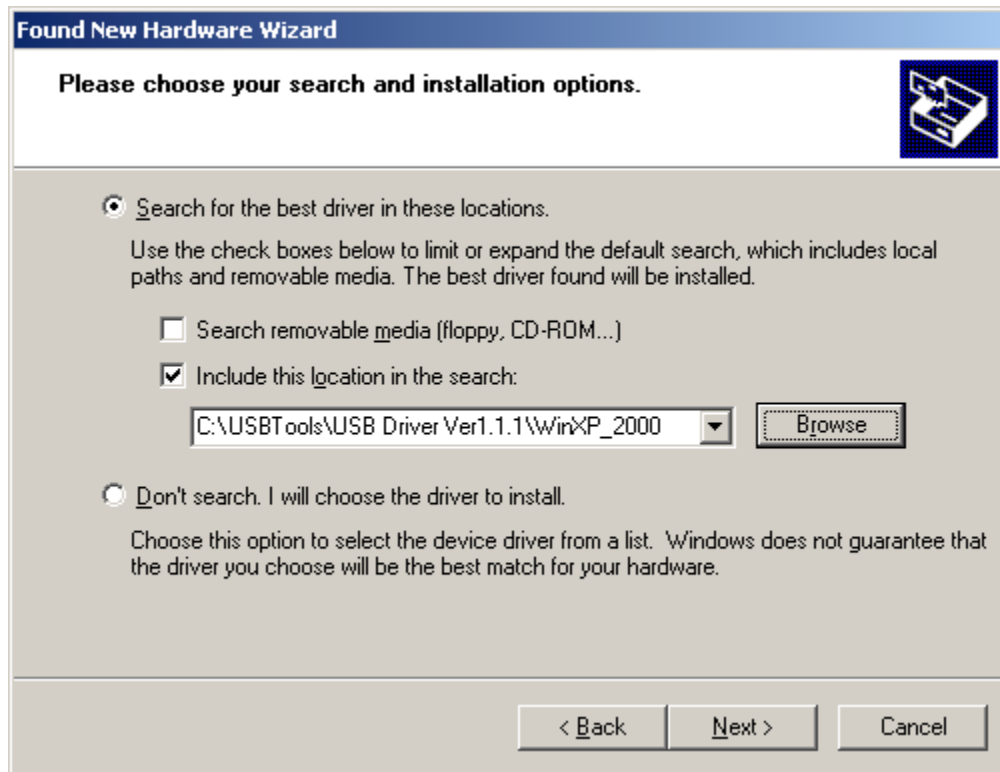
The USB cable does not charge the phone's battery.

Installing the NEC USB Drivers

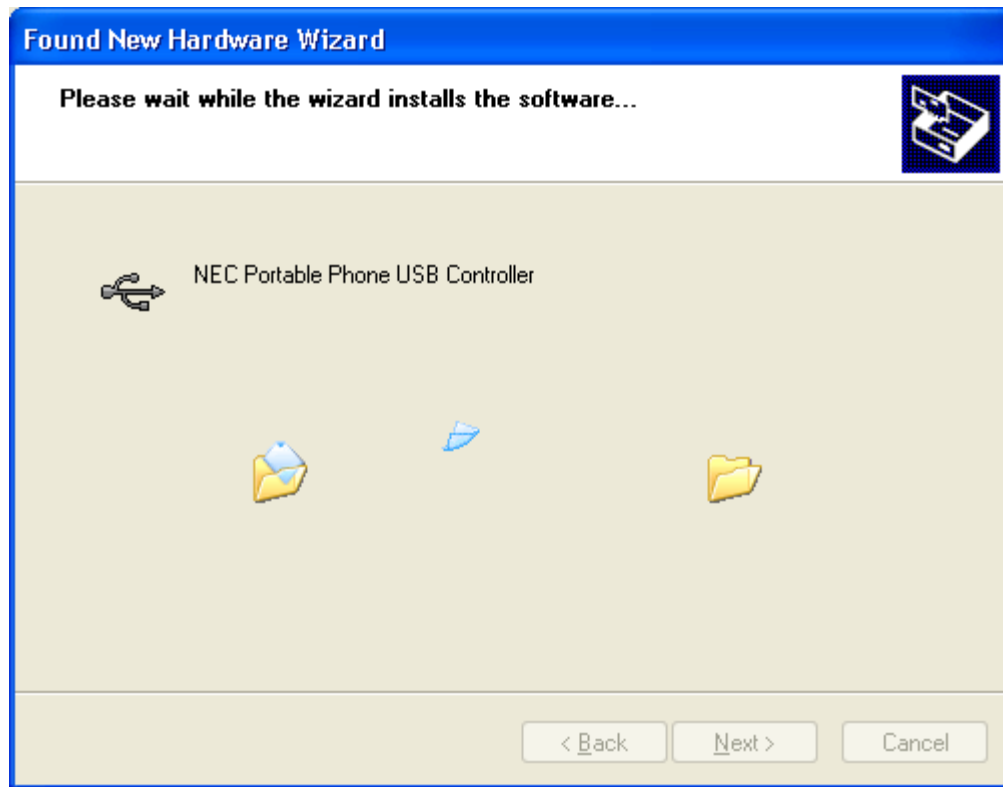
After you connect the USB cable to your computer, plug the cable into your NEC Wireless Phone, and power-on the phone, the **Found New Hardware Wizard** displays.



1. Click on the **Install from a list or specific location (Advanced)** button. Click the **Next** button. The next wizard screen displays.



2. Click on the **Search for the best driver in these locations** button. Place a checkmark in the **Include this location in the search:** box.
 - If the check box beside **Search removable media (floppy, CD-ROM...)** is checked, click on it to remove the check mark.
3. Click the **Browse** button. The **Browse** box displays. Find and click on **WinXP_2000** in **C:\USBTtools\USB Driver Ver1.1.1**. The folder name **WinXP_2000** is highlighted. Click **OK** and return to the wizard screen.
4. Click the **Next** button. The next wizard screen displays.



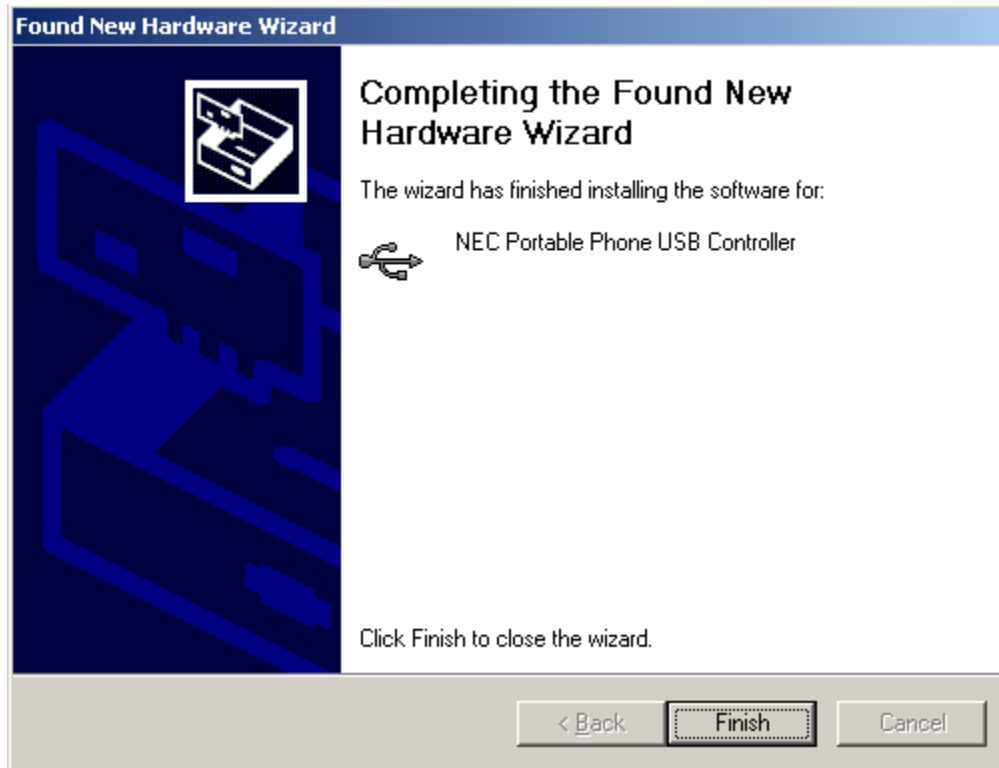
5. While the software is installing, the **Hardware Installation** dialog box displays.



6. Click **Continue Anyway**. The software continues to install. The next wizard screen displays when installing is finished.

NOTE: You will need to select Continue Anyway to continue the installation process.

NEC America and independent testing companies have tested the drivers on Windows XP.



7. Click **Finish**. The **Found New Hardware Wizard** displays again to install the next USB driver.
8. Windows XP will display two (2) more sets of the **Found New Hardware Wizard** screens to install the remaining USB drivers. Follow the previous USB driver instructions for each set of the **Found New Hardware Wizard** screens.

NOTE: The second and third wizard screens will report “unknown device.” This is part of the normal installation process. The title “NEC Portable Phone USB Modem” displays at the end of the installation of the second driver. The title “NEC Portable Phone USB OBEX Port” displays for the third driver.

Technical Support and Assistance

For technical support and assistance, during regular business hours (Central Standard Time), contact NEC at:

1-800-637-5917, Option 3

Uninstall NEC USB Drivers Process

To uninstall the NEC USB Drivers from your computer:

1. Open **Windows Explorer** or **My Computer**.
2. Open the **UnInst** folder located in **C:\USBTools\USB Drivers Ver1.1.1**.
3. Double-click **UNINWNUS** icon.
4. Follow the on-screen instructions.

NOTE: If you uninstall the NEC USB drivers using any other method (for example, using the Remove Hardware Wizard) and decide to re-install the drivers at a later time, you will encounter installation problems. Therefore, be sure to follow the instructions above to uninstall the NEC USB Drivers.

GPRS Dial Up Settings

This section provides the information of:

- How do I create a new Internet connection in order to utilize the NEC Wireless Phone as a modem?
- How do I use the new Internet connection?
- How do I end the GPRS connection?

Creating a New Connection

To create a new Internet connection in order to utilize the NEC Wireless Phone as a modem for Windows XP:

1. Ensure that the USB cable is still attached to your computer and NEC Wireless Phone with the phone powered on.
2. Go to **Start** and **Control Panel**.
3. With the **Control Panel** window in Category view, select **Network and Internet Connections** and **Network Connection**. (Category view is the default mode.)

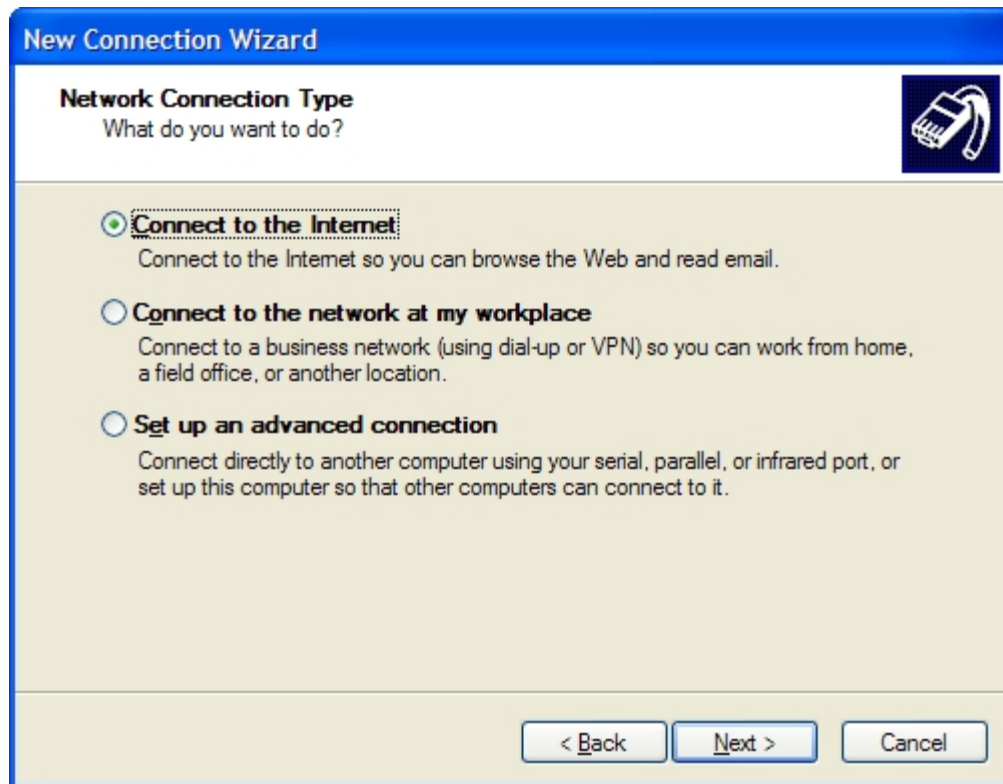
With the **Control Panel** window in Classical view, select **Network Connections**.

In the **Network Tasks** list, select the **Create a new connection** icon. The **New Connection Wizard** displays.

Windows will bring up two prompt screens that ask for the area code that you reside in. This only happens once when you begin to setup your first dial up connection. The GPRS connection does not refer to or depend upon this area code information. Please provide and confirm your area code and proceed to the next connection wizard screen.



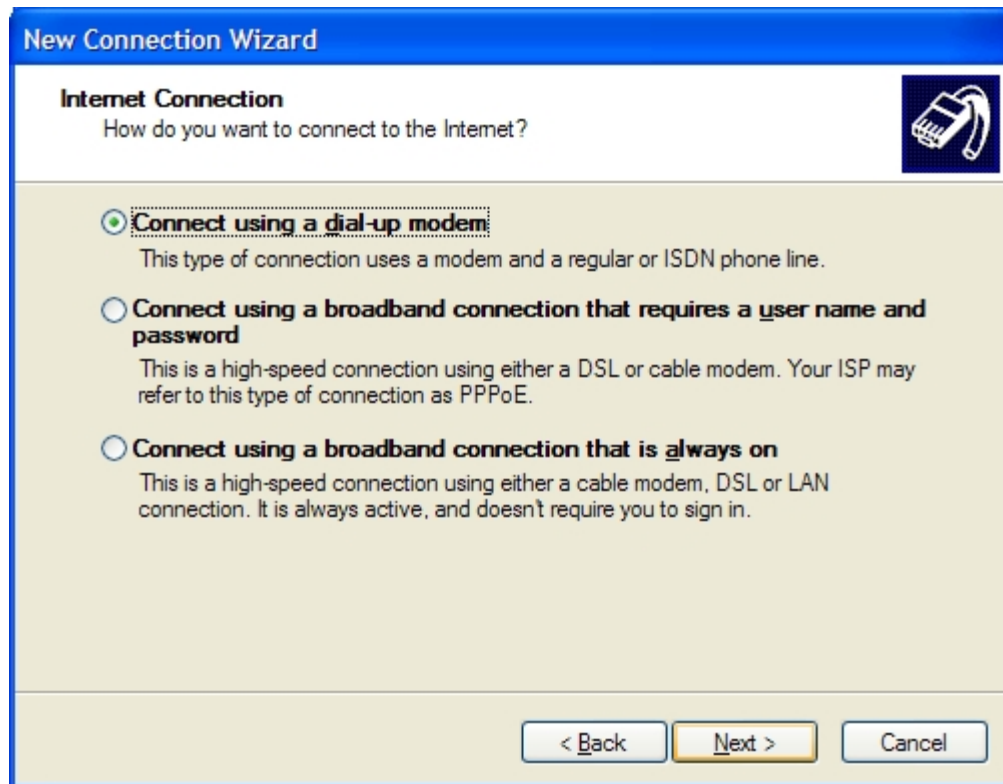
4. Click **Next** to continue.



5. Select the **Connect to the Internet** button and click **Next**.

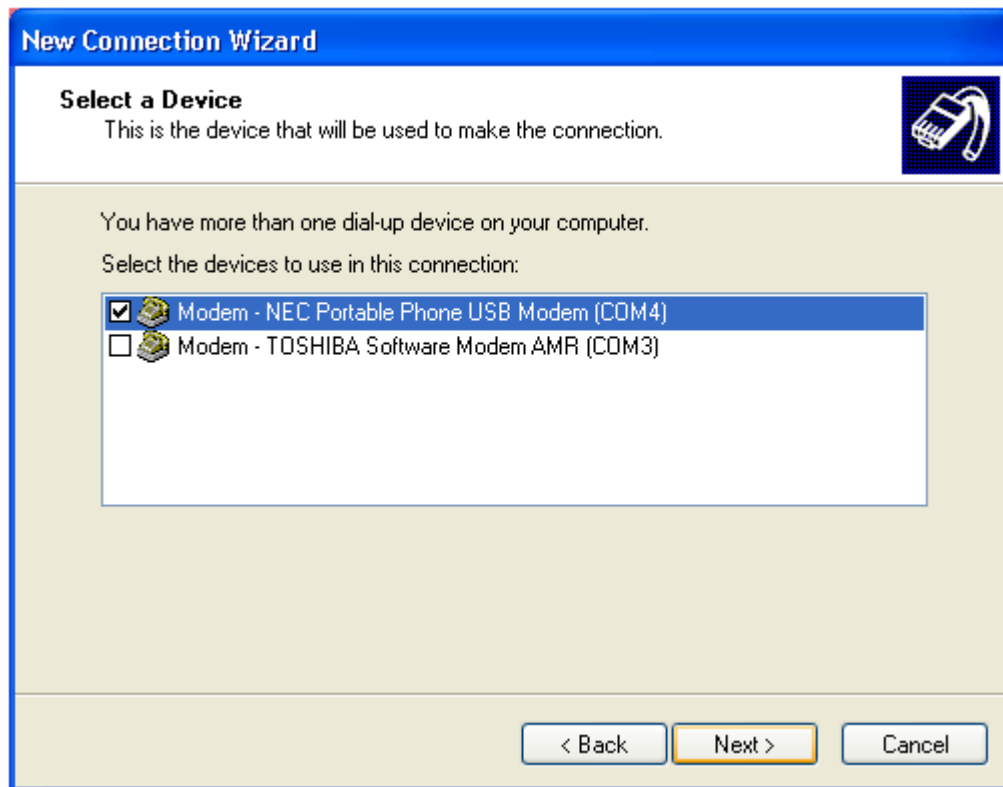


6. Select the **Set up my connection manually** button and click **Next**.

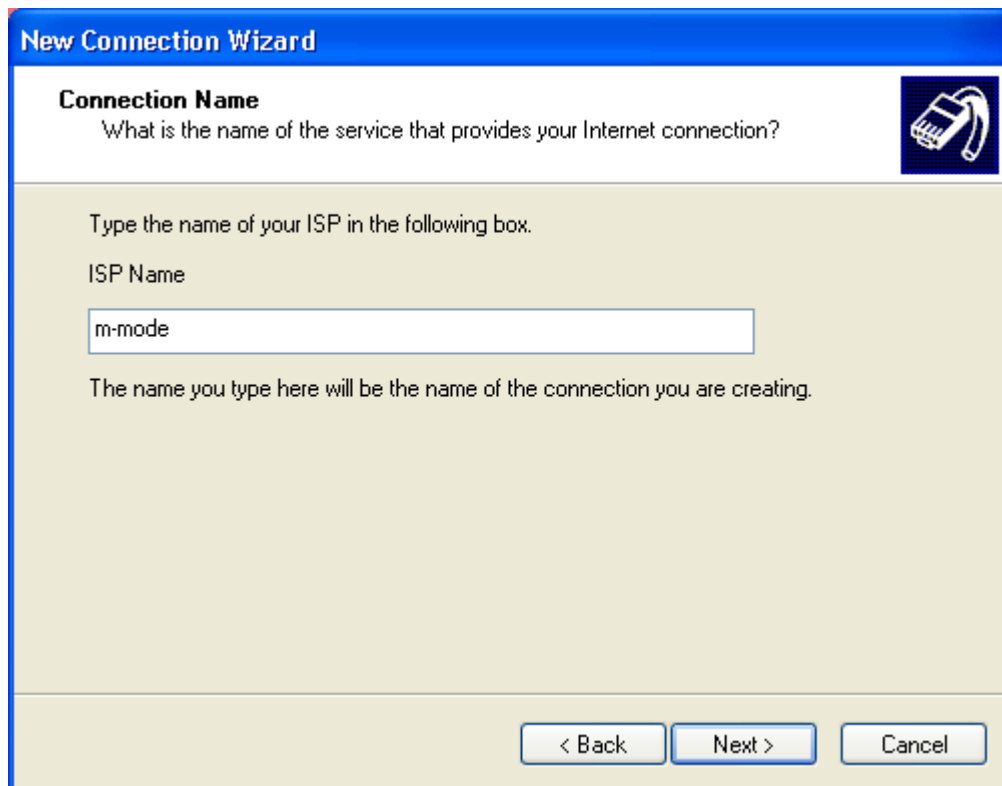


7. Select the **Connect using a dial-up modem** button and click **Next**.

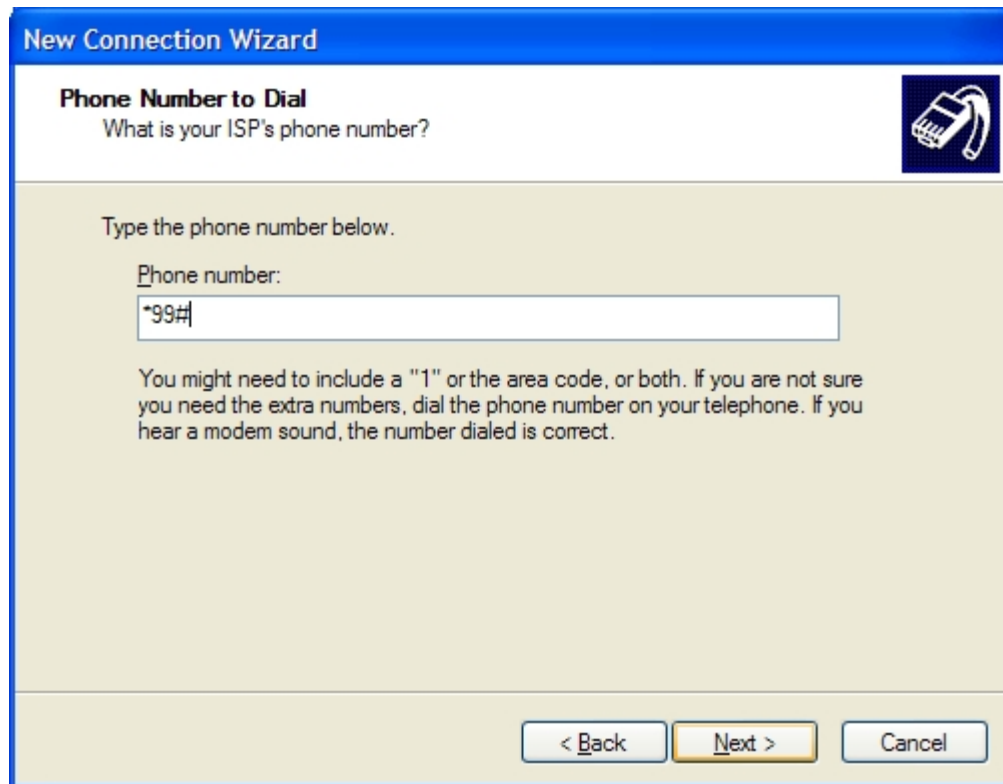
If no other built-in modems are installed on your computer (only Modem – NEC Portable Phone USB Modem), this screen may not display.



8. Place a checkmark in the box beside NEC Portable Phone USB Modem. Make sure that there are no checkmarks beside any other devices. Click **Next**.

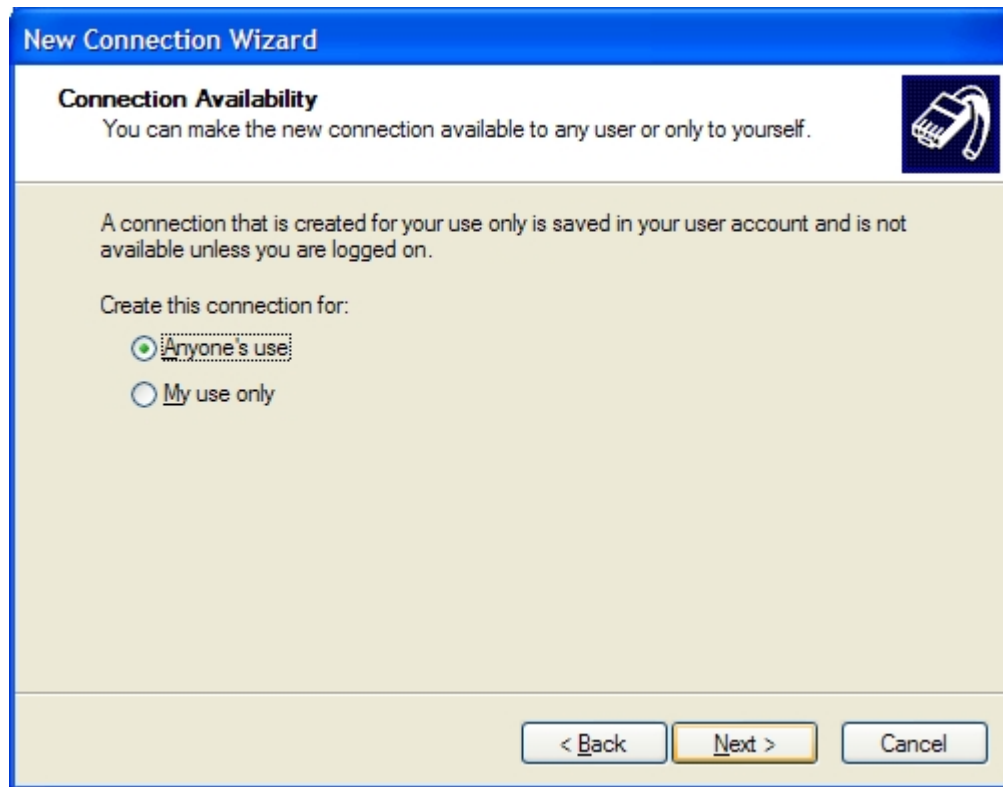


9. Enter a title, such as “m-mode” in the **ISP Name** field. Click **Next**.



10. Enter ***99#** in the Phone number field. Click **Next**.

This screen may not appear, depending upon your Windows configuration.



11. Select the **Anyone's use** button and click **Next**.

New Connection Wizard

Internet Account Information
You will need an account name and password to sign in to your Internet account.

Type an ISP account name and password, then write down this information and store it in a safe place. (If you have forgotten an existing account name or password, contact your ISP.)

User name:

Password:

Confirm password:

Use this account name and password when anyone connects to the Internet from this computer

Make this the default Internet connection

Turn on Internet Connection Firewall for this connection

< Back Next > Cancel

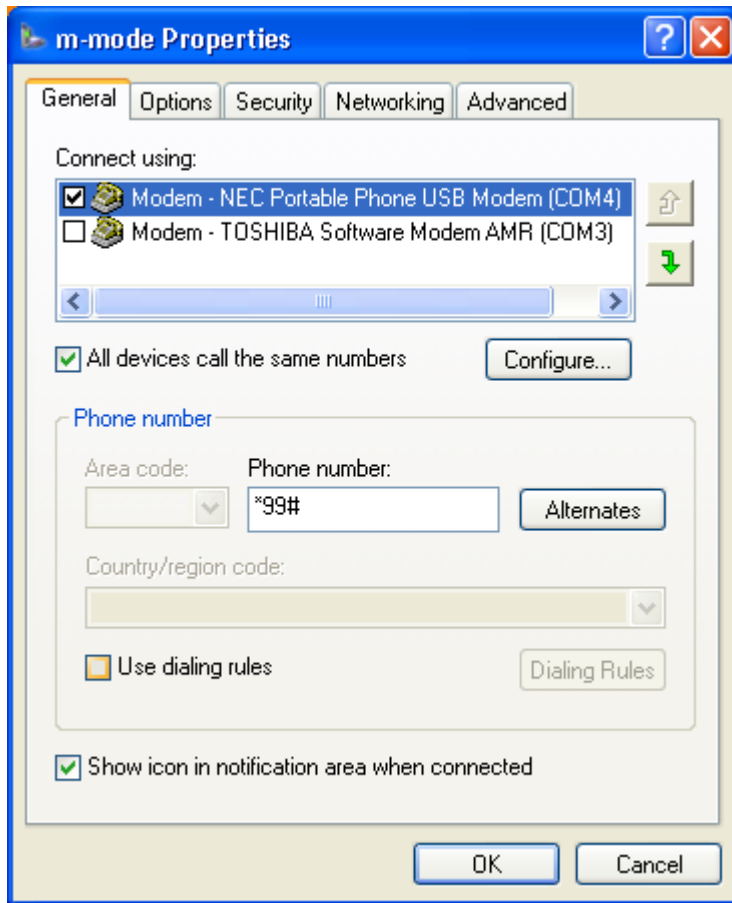
12. Leave the **User name** and **Password** fields blank as they are not presented to the GPRS interface. Place a checkmark in the **Turn on Internet Connection Firewall for this connection** box. Make sure that there are no checkmarks in the other boxes. Click **Next**.



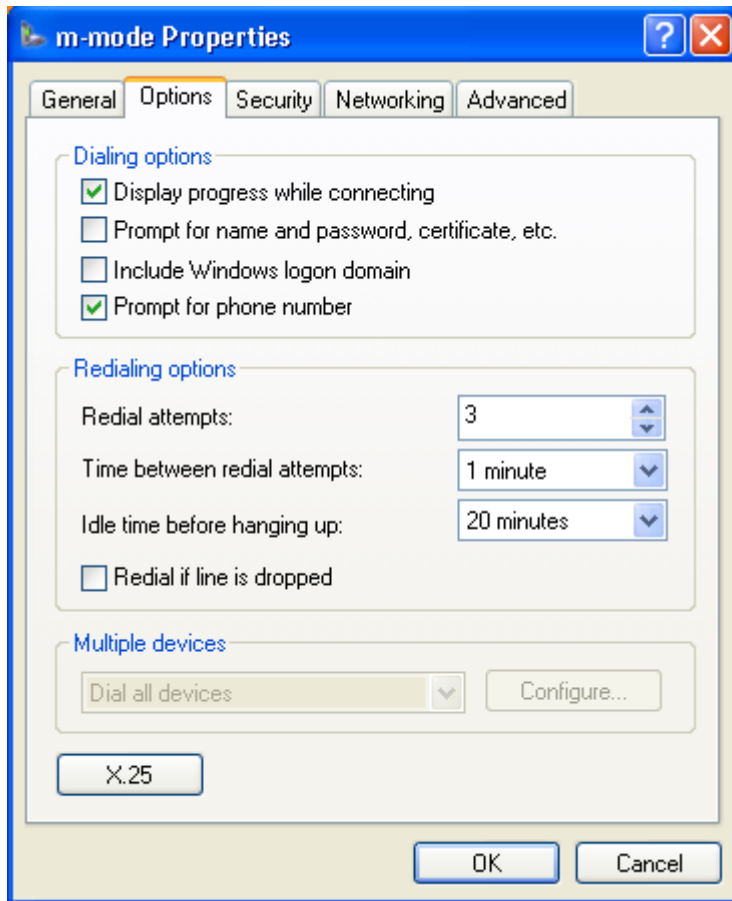
13. Place a checkmark in the **Add a shortcut to this connection to my desktop** box so that the desktop can be easily used to establish a GPRS session. Click **Finish**.



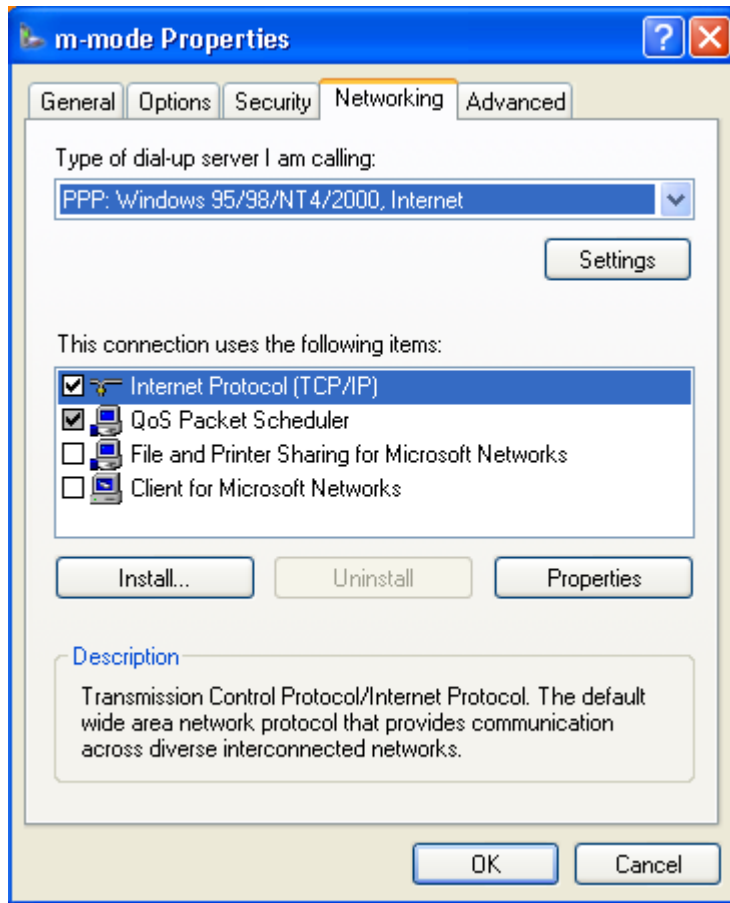
14. The **Connect m-mode** window displays. Click **Properties** to set up the rest of the parameters.



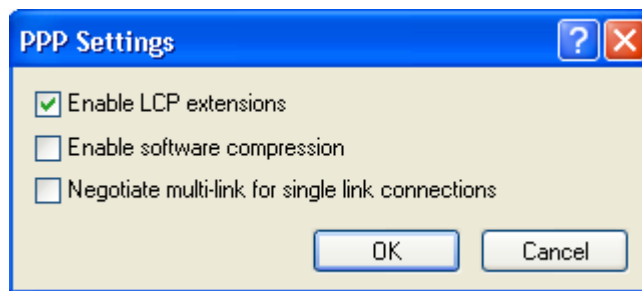
15. Make sure that the NEC Portable Phone device is the only one with a checkmark.
Click on the **Options** tab.



16. Remove the checkmark in the **Prompt for name and password** box. Click on the **Networking** tab.

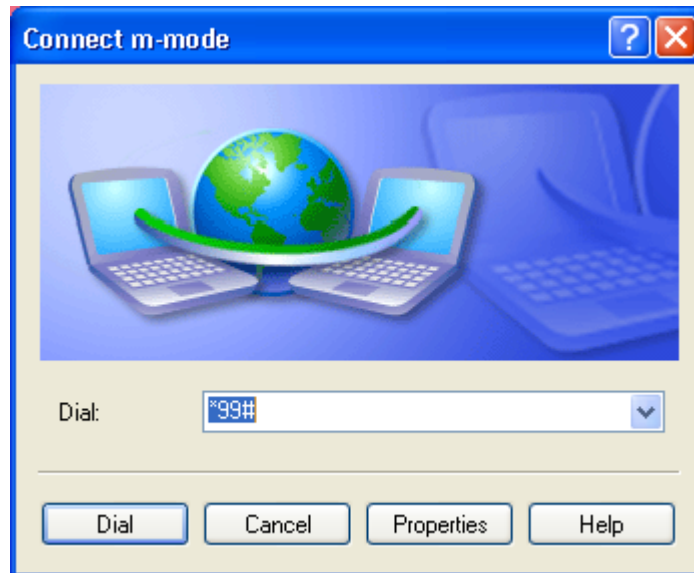


17. Click the **Settings** button.



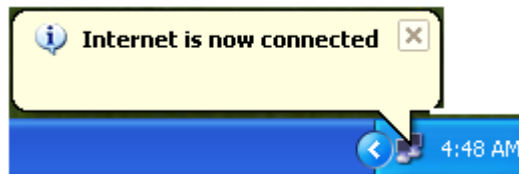
18. Remove the checkmark in the **Enable software compression** box. Click **OK** to return to the **Properties** dialog box.

19. Click **OK** to save the settings and exit the **Properties** dialog box.



20. Make sure that the dial string still contains ***99#**. Click Dial.


Wait for a positive connection report to use the web browser on your computer. A pop-up message displays on the lower right corner at the task bar.



21. Click on the desktop **Internet Explorer** icon and begin accessing the Internet.

Using the New Internet Connection

Each time that you want to use the AT&T GPRS connection:

1. Check the NEC Wireless Phone's battery level icon in the status bar of the Idle screen for sufficient charge. The USB cable does not charge the phone's battery.
2. Insert the computer end of the USB cable into the computer's USB port. Always use the same computer USB port.
3. Gently squeeze the release clips on each side of the USB plug and insert into the adapter port of the NEC Wireless Phone.
 - Be sure that the rectangular opening on the connection is lined up with the rectangular opening in the wireless phone. The plug will slide easily into the opening. **DO NOT FORCE THE PLUG!**
4. Press the  (End/On-Off) key to power-on the NEC Wireless Phone.
5. Double-click on the connection shortcut icon on the desktop or go to **Control Panel, Network Connections**, and select the connection name.
6. Click **Dial** to establish an active connection to AT&T Wireless GPRS service. Verify that the NEC Wireless Phone's GPRS icon displays in the status bar of the phone's Idle screen to show that GPRS service is available and an active connection has been made.
7. Open the browser software (Internet Explorer, Netscape Navigator©, etc.). You may have more than one browser open on your computer at a time.

NOTE: Other Internet browsers (such as Netscape Navigator) may work, they have not been tested and are not supported by NEC.

Disconnecting GPRS

Exiting or closing the browser does not terminate the GPRS connection. The GPRS connection is still active.

To disconnect the GPRS connection:

1. Close all browser windows.
2. Right click on the desktop icon or the taskbar icon (lower right corner of screen) for the mMode connection.
3. Click Disconnect option from the drop-down menu.
4. Remove the USB cable from the NEC Wireless Phone and computer.